

GLAMOUR

SIMPLY MAGNETIC



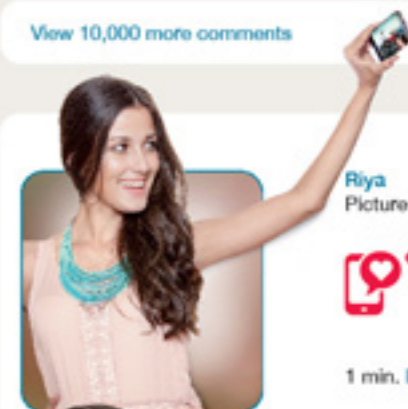
"Check out
My new Hero Glamour."

Allu Arjun

Like · Comment · Share

Maya Singh, Karmya, Lara Kapoor,
Aarna Sharma, and 80,000 others like this.

[View 10,000 more comments](#)



Riya
Picture-perfect! ;)



1 min. Like 2178



Tanusree
You know what's on
my mind! ;)



3 min. Like 6584



Kanika
Committed to Single.
Ready to mingle ;)



5 min. Like 8945

FEATURES



SPECIFICATIONS

ENGINE

Type	Air cooled, 4 - stroke single cylinder OHC
Displacement	124.7 cc
Maximum Power	6.72 kW (9.1 Ps) @7000 rpm
Maximum Torque	10.35 N-m @4000 rpm
Bore x Stroke	52.4 x 57.8 mm
Compression Ratio	9.1:1
Starting	Self Start / Kick Start
Ignition	AMI - Advanced Microprocessor Ignition System

TRANSMISSION

Clutch	Multiplate wet
Gear box	4 - speed constant mesh

Chassis

Type	Tubular Double Cradle Type
------	----------------------------

SUSPENSION

Front	Telescopic Hydraulic Shock Absorbers
Rear	Swing Arm with Hydraulic Shock Absorbers

BRAKES

Front	Disc	240 mm Dia; Pad - Non Asbestos type
	Drum	Internal expanding shoe type - 130 mm Liners - Non Asbestos type
Rear	Drum	Internal expanding shoe type - 130 mm Liners - Non Asbestos type

WHEELS AND TYRES

Rim Size	Front 18 x 1.60, Spoke Wheel / Cast Wheel Rear 18 x 1.60, Spoke Wheel / Cast Wheel
Tyre Size	Front 2.75 x 18 - 42 P / 4 PR Rear 3.00 x 18 - 52 P / 6 PR

ELECTRICALS

Battery	12 V - 3 Ah MF Battery
Head Lamp	12 V - 35 W / 35 W - Halogen Bulb (Multi-Reflector Type)
Tail / Stop Lamp	12 V - 5 / 21 W (Multi-Reflector)
Turn Signal Lamp	12 V - 10 W (Amber Bulb) x 4 nos (MFR - Clear Lens)
Engine Oil Grade	SAE 10 W 30 SJ Grade
Fuel Tank Capacity	13.6 litre (Min)
Reserve	1 litre (Usable Reserve)

DIMENSIONS

LxWxH	2005 X 735 X 1070 mm
Wheelbase	1265 mm
Ground clearance	150 mm

WEIGHT

Kerb weight	125 Kg (Kick) / 129 Kg (Self)
-------------	-------------------------------

GLAMOUR
SIMPLY MAGNETIC

