

Svartpilen



Svartpilen 701

Svartpilen 401

Svartpilen 125

2021

husqvarna-motorcycles.com
English



Husqvarna®
MOTORCYCLES

A blurred mountain landscape with a winding road and a road guardrail in the foreground. The scene is captured from a high angle, showing a dark, winding road that curves through a valley. In the foreground, a white road guardrail runs diagonally across the frame. The background features rugged, brown and green mountains under a blue sky with scattered white clouds. The overall image has a motion blur effect, suggesting speed and movement.

Unplug

*ESCAPING THE CLUTTER AND CHAOS
SHOULDN'T BE A QUIET OCCASION.
IT SHOULD BE CELEBRATED WITH A
TWIST OF THE THROTTLE AND A BLUR
OF THE SURROUNDING LANDSCAPE.*



S v a r t p i l e n 7 0 1

**Find a void –
and fill it.**

*CONTROLLED CHAOS.
A SIDEWAYS SYMPHONY OF SOUNDS,
SENSATIONS AND SPEED.*



Powerful, capable and rugged, the Svartpilen 701 remains true to its borrowed flat-tracker silhouette. It's defined by an easy-going rawness with a focus on delivering an immersive riding experience above all else. Powered by a 692.7 cc single-cylinder engine, the Svartpilen 701 uses its 55 kW (75 hp) and 72 Nm to great effect. This comes courtesy of an engine management system (EMS) that continuously compares engine parameters with data from sensors, and adjusts the throttle valve accordingly. The result is effortless acceleration matched by smooth power delivery and instant throttle response.

A lightweight steel trellis frame delivers confidence-inspiring handling in all weather and road conditions. This is thanks to flex qualities that transmit feedback to the rider, along with advanced agility and stability. This, combined with perfect weight distribution and a tight turning circle, makes the Svartpilen 701 ideal in tight urban environments.

But when the empty road calls for it – when you need to wrestle the bars and scrub the tyres – the Svartpilen 701 will happily oblige.



THE THINNING,
ICY AIR IN MY LUNGS
IS MATCHED ONLY
BY THE BREATH-TAKING
SCENERY AROUND ME.

Svartpilen 701

They say the devil is in the details.

Integrated into the bodywork is a key design feature known in-house as "the split" – a physical division that runs between the main frame and subframe. This lends itself to the overall, uncluttered ergonomics of the Svartpilen 701.

DARK COLOUR,
RUGGED LINES AND
STRONG HAUNCHES.



17" (REAR) & 18" (FRONT)
SPOKED WHEELS,
STEEL TRELIS FRAME,
CNC FOOT PEGS,
BREMBO BRAKES AND
ADJUSTABLE WP SUSPENSION.

POWERED BY A 692.7 cc
SINGLE-CYLINDER ENGINE
DELIVERING 75 HP AND 72 Nm.



Explore the
city limits.

S v a r t p i l e n 4 0 1

SOMETIMES
THE BEST RIDE
IS NOT A WHERE,
BUT A WHEN.





I'M A MASTER OF ALL
I SURVEY - A FULL TANK
OF FUEL, AND NOTHING
BUT POSSIBILITIES AHEAD
OF ME. //



The Svartpilen 401 makes no excuses about its rugged appeal. At home on the broken roads which fringe its metropolitan playground, the Svartpilen 401 inspires confidence to explore. Using a simple yet proven recipe, which blends a commanding seating position with a torquey engine, the Svartpilen 401 goes where others fear to tread.

A compact, modern 373 cc single-cylinder delivers an impressive 32 kW (44 hp) and 37 Nm of torque from low down in the RPM range, making it perfect for urban riding. A counter-balancer shaft keeps vibration to a minimum while electronic fuel injection and a 46 mm throttle body, operated by a ride-by-wire system, delivers sharp but refined and controllable power with low fuel consumption.

At the core of the Svartpilen 401 is a lightweight steel trellis frame. This lends itself to the motorcycle's playful character and overall agility and easy handling. Made from steel using hydroformed tubes and robot welding, the frame is not only strong but also offers precise feedback to the rider. Designed with specific flex characteristics, the frame works in harmony with the adjustable WP suspension to deliver comfort and predictability, even when the road surface gets more rugged, uneven or unpredictable.

Svartpilen 401

Real-world usability.

Casting an iconic silhouette, but housing a contemporary engine and electronics package, the Svartpilen range pays homage to dirt track heroes with modern-day technology. It makes no excuses about its heritage, but keeps its sights firmly on the future.

DEFINED BY ITS
DARK Demeanor
AND RUGGED
PROTECTIVE PARTS.



STEEL TRELLIS FRAME,
HIGH HANDLEBARS WITH
RELAXED BEND, ROBUST
SPOKED WHEELS AND
ADJUSTABLE WP
APEX SUSPENSION.

373 cc SINGLE-CYLINDER
ENGINE DELIVERING AN
IMPRESSIVE 44 HP AND
37 NM OF TORQUE.

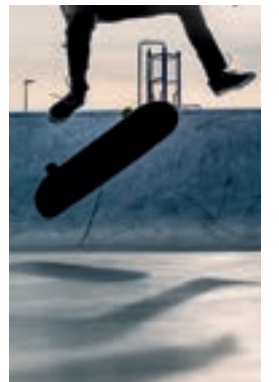
Roll your
own way.

S v a r t p i l e n 1 2 5





IT'S GO TIME!
AS YOU FIRE UP THE
FEISTY 4-STROKE
SINGLE, YOU KNOW YOU'RE
ON THE RIGHT PATH. //



The Svartpilen 125 urges you to keep your aim forward – to get ahead in the modern landscape. With its responsive 15 hp engine, it eagerly awaits the alleyways and scenic detours of your suburban exploration. An upright and confident posture puts you at the centre of the action as you navigate its nimble 146 kg chassis in any direction you choose.

Sharing the same robust exterior and composed stature as the Svartpilen 401, it stands confidently with WP APEX suspension, ByBre brakes and a modern electronics package (which includes switchable ABS modes), to set it apart from its 125 cc class contemporaries.

Despite its imposing presence, the Svartpilen 125 is ideal for the young rider or new entrant to motorcycling. The smooth and usable power is designed to be responsive, yet still peaks within the allowed A1 license maximum power levels.

There's no more time to wait, the day is yours to seize!



THE SVARTPILEN 125
MAKES NO APOLOGIES
FOR ITS UNIQUE
APPEARANCE, DISTINCT
LINES OR ROBUST EXTERIOR.



24



Svartpilen 125

Any way you choose.

The Svartpilen 125's self-confident stance draws upon industry-leading modern technology and rugged functionality for smooth exploration beyond the darkest corners of your urban domain.

THE ROBUST EXTERIOR
HINTS AT ITS READINESS
TO GET OUT THERE.

THE SAME HIGH HANDLEBARS
AND IMPOSING STEEL TRESSIS
CHASSIS AS ITS 401 SIBLING,
WITH WP APEX SUSPENSION
AND STURDY SPOKED WHEELS.



THE COMPACT 125 CC
4-STROKE ENGINE PULSES OUT
15 HP WITH 12 NM OF BROAD
AND USEFUL TORQUE.

Individual performance,
distinctive style.



AKRAPOVIČ "SLIP-ON LINE"

WAVE BRAKE DISC



ERGO SEAT
ERGO PILLION SEAT

LED INDICATOR KIT



LICENCE PLATE
HOLDER SUPPORT

PURSUIT GTX JACKET



ELIMINATOR
HELMET



PURSUIT GLOVES

PURSUIT JEANS



PURSUIT SHOES





Engine	Svartpilen 701	Svartpilen 401	Svartpilen 125
Engine type	Single cylinder, 4-stroke	Single cylinder, 4-stroke	Single cylinder, 4-stroke
Displacement	692.7 cc	373 cc	125 cc
Bore/stroke	105/80 mm	89/60 mm	58/47.2 mm
Power	55 kW (75 hp) @ 8,500 rpm	32 kW (44 hp) @ 9,000 rpm	11 kW (15 hp) @ 9,500 rpm
Torque	72 Nm @ 6,750 rpm	37 Nm @ 7,000 rpm	12 Nm @ 7,500 rpm
Compression ratio	12.8:1	12.6:1	12.8:1
Transmission	6 gears	6 gears	6 gears
Lubrication	Pressure lubrication with 2 oil pumps	Wet sump with 2 oil pumps	Wet sump with 2 oil pumps
Cooling	Liquid cooling	Liquid cooling	Liquid cooling
Clutch	APTC™ slipper clutch, hydraulically operated	Multi disc slipper clutch	Multi disc
Starter/battery	Electric starter/12V 8.6Ah	Electric starter/12V 8Ah	Electric starter/12V 8Ah
Fuel system	Keihin EFI (throttle body 50 mm)	Bosch EFI (throttle body 46 mm)	Bosch EFI (throttle body 46 mm)
Engine management/ignition	Keihin EMS, double ignition	Bosch EMS	Bosch EMS
Control	4 V/OHC with intake cam levers and exhaust rocker arm	4 V/DOHC with cam levers	4 V/DOHC with cam levers
Silencer	Stainless steel primary and secondary silencer	Stainless steel/aluminium silencer with regulated catalytic converter	Stainless steel/aluminium silencer with regulated catalytic converter
Primary drive	36:79	30:80	22:72
Final drive	16:40	15:45	14:45

Chassis

Frame	Chromium-Molybdenum-Steel trellis frame, powder coated	Steel trellis frame, powder coated	Steel trellis frame, powder coated
Subframe	Aluminium	Steel trellis frame, powder coated	Steel trellis frame, powder coated
Handlebar	Aluminium	Aluminium forged	Aluminium forged
Front suspension	WP APEX-USD Ø 43 mm	WP APEX-USD Ø 43 mm	WP APEX-USD Ø 43 mm
Rear suspension	WP APEX-Monoshock with linkage	WP APEX-Monoshock	WP APEX-Monoshock
Suspension travel front/rear	150 mm	142 mm	142 mm
Front brakes	Brembo four piston, radial mounted, brake disc Ø 320 mm	ByBre, opposed four piston caliper, brake disc Ø 320 mm	ByBre, opposed four piston caliper, brake disc Ø 320 mm
Rear brakes	Brembo single piston, floating caliper, brake disc Ø 240 mm	ByBre, single piston, floating caliper, brake disc Ø 230 mm	ByBre, single piston, floating caliper, brake disc Ø 230 mm
ABS	Bosch 9M+	Two channel Bosch 10.1MB	Two channel Bosch 10.1MB
Front/rear wheel	Spoked wheels with aluminium rims, 3.00 x 18"; 5.00 x 17"	Spoked wheels with aluminium rims, 3.00 x 17"; 4.00 x 17"	Spoked wheels with aluminium rims, 3.00 x 17"; 4.00 x 17"
Front/rear tyres	Pirelli MT60 RS 110/80 R18; 160/60 R17	Pirelli Scorpion Rally STR 110/70 R17; 150/60 R17	Pirelli Scorpion Rally STR 110/70 R17; 150/60 R17
Chain	X-Ring 5/8 x 1/4"	X-Ring 5/8 x 1/4"	X-Ring 5/8 x 1/4"
Steering head angle	65°	65°	65°
Triple clamp offset	28 mm	33 mm	33 mm
Wheel base	1,436 ± 15 mm	1,357 ± 15.5 mm	1,357 ± 15.5 mm
Ground clearance	164 mm	145 mm	145 mm
Seat height	835 mm	835 mm	835 mm
Tank capacity, approx.	11.2 litres/2.3 litres reserve	9.5 litres/1.5 litres reserve	9.5 litres/1.5 litres reserve
Weight, without fuel, approx.	161 kg	152 kg	146 kg

Own your own

FINANCE



Financing your own dream bike couldn't possibly be any easier. With Husqvarna Motorcycles' financial partner, riding off on a brand new motorcycle is simpler than you could've ever imagined. For each specific motorcycle, individually tailored financial solutions enable you to race off in no time. Speak to your nearest authorised Husqvarna Motorcycles dealer for more information.

EXTENDED WARRANTY



Confidently take to the streets and experience more with Husqvarna Motorcycles' extended warranty. It's really easy; extend your standard manufacturer's warranty before it expires. You can renew it every year for up to 12 years or 80,000 km. Once covered, claims can easily be made via your authorised Husqvarna Motorcycles dealer to ensure the best possible service. Warranties on the bike can also be transferred upon change of ownership. So new or used, you can ride your Husqvarna motorcycle with peace of mind.

MOBILITY SERVICE



Husqvarna Motorcycles' lifetime* Mobility Service keeps you safe at every turn with 12-month coverage free of charge. Lifetime Mobility Service is renewed at no additional cost for a maximum of 12 months with each service at your authorised Husqvarna Motorcycles dealer until the next service. Thanks to the Assistance Center, available 24 hours a day, 7 days a week, 365 days a year throughout Europe, any potential breakdowns are worry-free. See more details at <http://husqvarna-motorcycles.com/mobilityservice>.

Husqvarna Motorcycles Finance, Extended Warranty and Mobility Service might not be available for all markets. Please ask your local authorised Husqvarna Motorcycles dealer about the offers and conditions in your country.

*The definition of lifetime for single-cylinder vehicles: max. 60,000 km or 8 years, whichever comes first; for two-cylinder vehicles: max. 80,000 km or 8 years, whichever comes first.

Legal disclaimer

Imitation not advised!

The riders illustrated are professional motorcycle riders. The photos were taken on closed racing circuits or closed roads. Husqvarna Motorcycles wishes to make all motorcyclists aware that they need to wear the prescribed protective gear and always ride in a responsible manner in accordance with the relevant and applicable provisions of the road traffic regulations. Only the homologated versions of the motorbikes promoted in this brochure are suitable for road use. Husqvarna Motocross models are not approved for use on public roads. For this reason, it is absolutely essential that use on public roads is avoided. The warnings and hazard notices in the owner's manual must be observed without fail when purchasing a motorcycle and using it for the first time (especially the prescribed speed limits). Some products in the Husqvarna Motorcycles accessories range are not approved for use on public roads in certain circumstances (varies from country to country). Please contact your Husqvarna Motorcycles dealer for further information. The illustrated vehicles may vary in selected details from the production models and some illustrations feature optional equipment available at additional cost. All information concerning the scope of supply, appearance, services, dimensions and weights is non-binding and specified with the proviso that errors, for instance in printing, setting and/or typing, may occur; such information is subject to change without notice. Please note that model specifications may vary from country to country.



Husqvarna Motorcycles GmbH
Stallhoferstraße 3
5230 Mattighofen, Austria
www.husqvarna-motorcycles.com

